

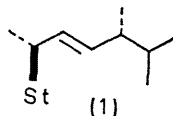
### Corrigendum

#### Stereospecific and Regiospecific Addition to an Isolated, Acyclic (Steroidal) Olefinic Bond

By D. H. R. BARTON, J. P. POYSER, P. G. SAMMES, M. B. HURSTHOUSE, and S. NEIDLE

*Chem. Comm.*, 1971, 715.

On p. 715, l.h.s., formulae, structure (1) should contain a double bond:



On p. 715, l.h.s., formulae, formula (3) should read: (3) X = H, Y = OH.